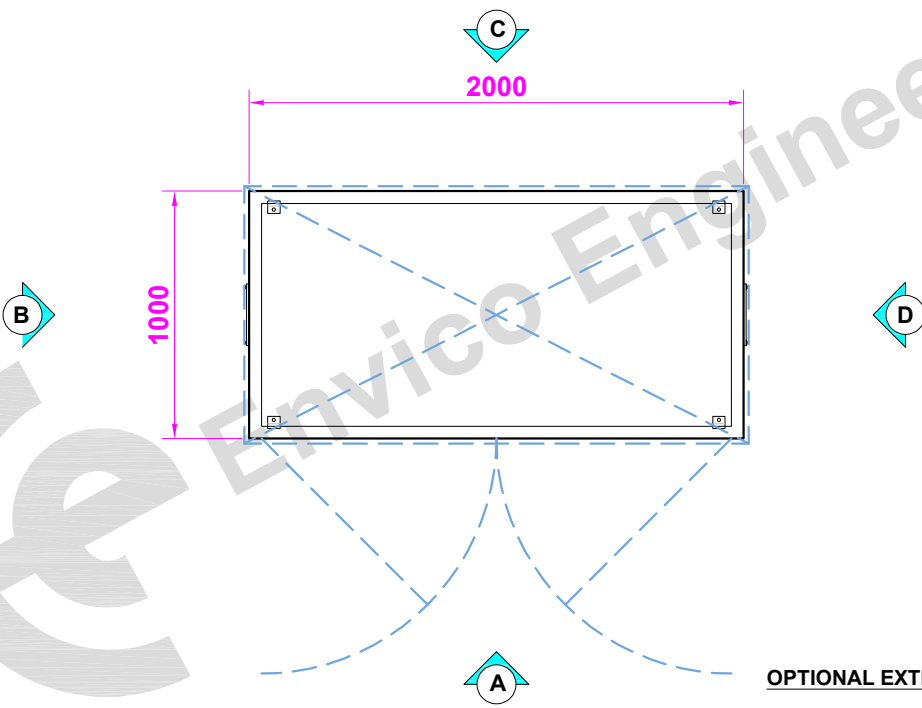
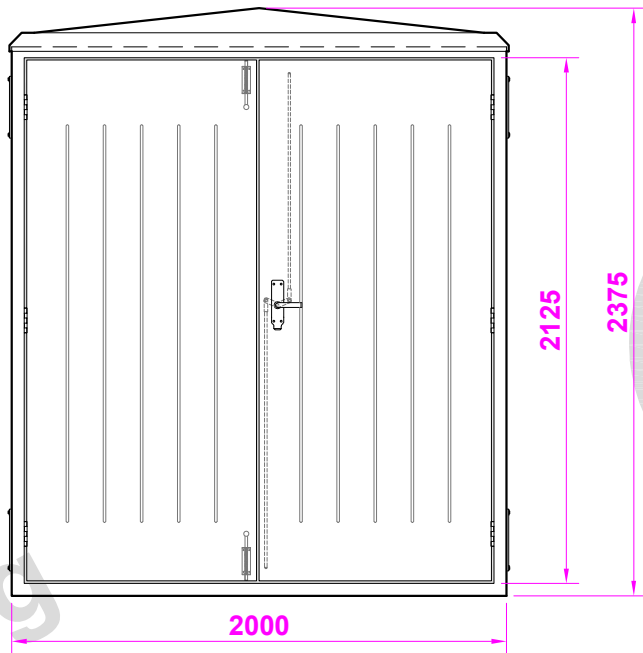


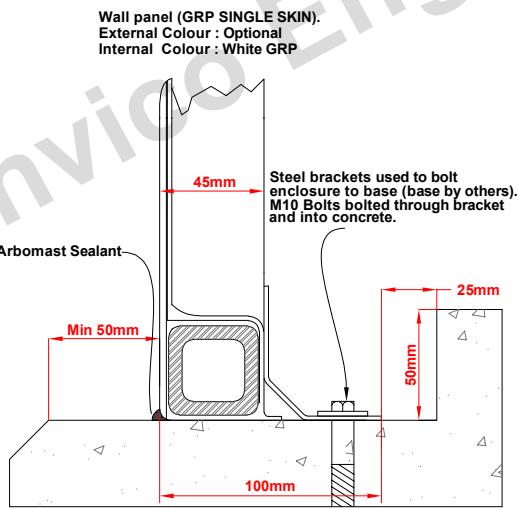
Plan View Elevation



Elevation (A) (front)



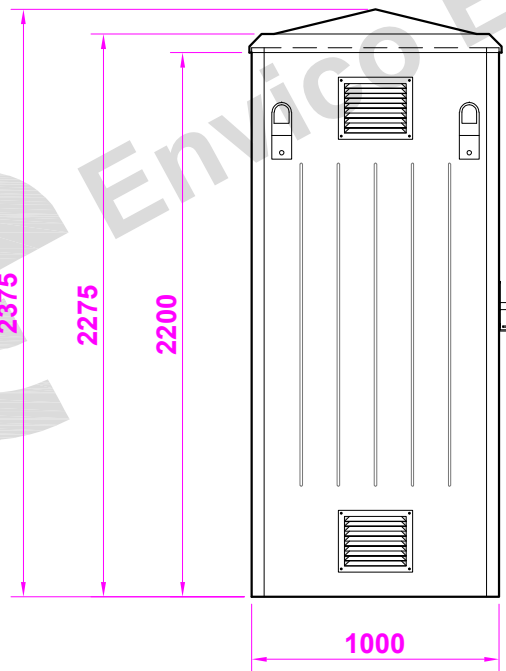
TYPICAL STEPPED BASE DETAIL
(RECOMMENDED)



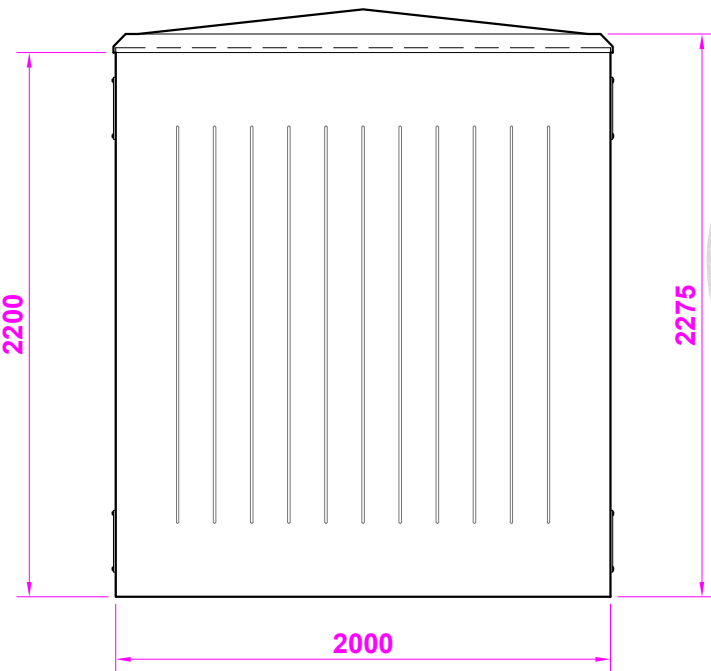
OPTIONAL EXTRAS:

- 18mm Sadolin treated mounting board to inside of rear wall.
- Double skin.

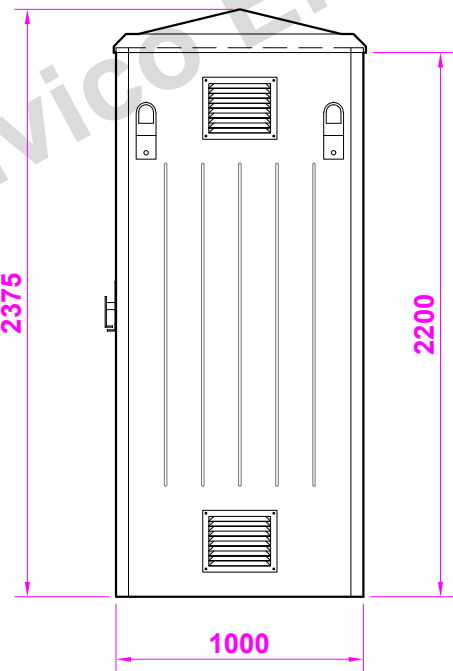
Elevation (B) (l/h side)



Elevation (C) (rear)



Elevation (D) (r/h side)



**G.R.P HOUSING
MODEL TR12**
APPROX WEIGHT: 250kg

CONSTRUCTION DETAILS

INTERNAL WIDTH : 1890mm
INTERNAL DEPTH : 890mm
INTERNAL HEIGHT : 2275mm

EXTERNAL WIDTH : 2000mm
EXTERNAL DEPTH : 1000mm
EXTERNAL HEIGHT : 2375mm

G.R.P CONSTRUCTION

LAYER 1. GEL COAT, COLOURED.
LAYER 2. 450GRM/M.SQ GLASS & RESIN
LAYER 3. 450GRM/M.SQ GLASS & RESIN
LAYER 4. 450GRM/M.SQ GLASS & RESIN
ALL RESIN TO CLASS II FIRE RETARDANT GRADE.

FRONT & BACK REINFORCED BY WELDED
40 x 40 STEEL BOX FRAME.
DOORS TO HAVE STEEL ALL
ROUND WITH TIMBER STIFFNERS.
ROOF TO HAVE TIMBER STIFFNERS WITH
PRESSED STEEL ANGLE AROUND BASE.

PARTS LIST

ITEM	QTY.	COMMENTS	ITEM	QTY.	COMMENTS
GRP DOUBLE DOOR	1	1900mm X 2125mm	TIMBER BATTENS		ENCAPSULATED IN ROOF
STAINLESS STEEL DOOR HINGES	6	ELEVATIONS A (DOORS)	GALV STEEL VENTS 250mm X 200mm	4	ELEVATIONS B & D (OPTIONAL)
ST - STEEL ESPAGNOLETTE LATCH	1	ELEVATIONS A	EXPLOSION RELIEF BRACKETS	4	
ST-STEEL SPRING TOWER BOLTS	2	ELEVATION A	ST - STEEL FIXING FEET	4	DRILLED FOR M10 X 100 BOLTS
10/10 STEEL DOOR STAYS	2	ELEVATION A	LIFTING EYES	4	ELEVATIONS B & D



Envico Engineering

THE DRAWING AND DESIGN IS THE PROPERTY OF ENVICO ENGINEERING LTD. AND WITHOUT THE WRITTEN CONSENT OF ENVICO ENGINEERING LTD. MAY NOT BE COPIED IN WHOLE OR IN PART OR COMMUNICATED TO A THIRD PARTY OR USED FOR ANY PURPOSE.